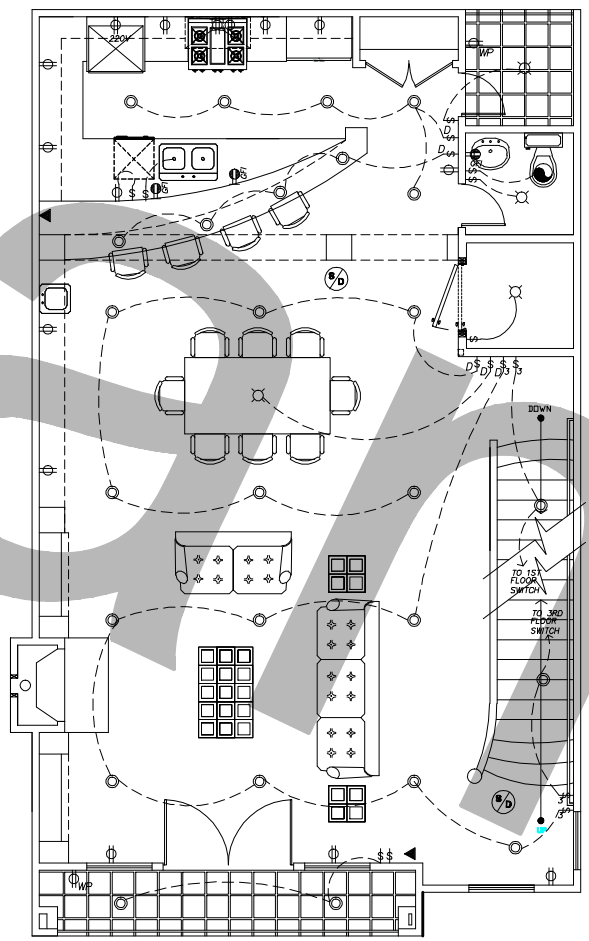
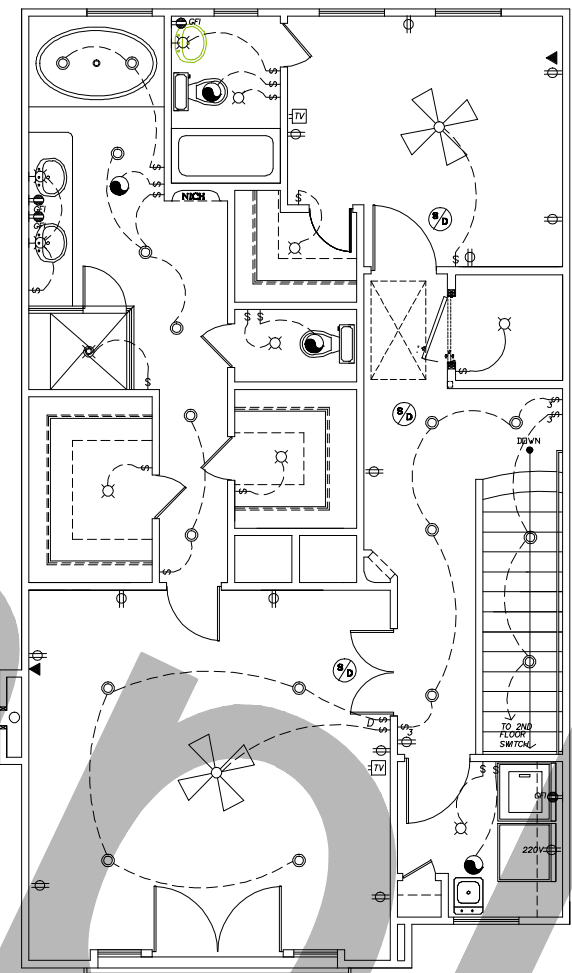


1 FIRST FLOOR



2 SECOND FLOOR



3 THIRD FLOOR

**SYMBOL LEGEND**

● CEILING MOUNTED EXHAUST FAN	⊕ GFI DUPLEX RECEPTACLE OUTLET GROUND FAULT INTERRUPTED	⚡ SINGLE POLE SWITCH
⊕ S/D SMOKE DETECTOR 110 VOLT HARD-WIRED IN SERIES PER R317.1 & R317.2 W/ BATTERY BACK UP.	⊕ WP DUPLEX RECEPTACLE OUTLET WEATHERPROOF DEVICE	⚡⚡ THREE WAY SWITCH
⊕ CEILING MOUNTED EXHAUST FAN WITH LIGHT	⊕ CEILING MOUNTED INCANDESCENT LIGHT FIXTURE	⚡⚡⚡ FOUR WAY SWITCH
⊕ 2-48 FLORESCENT LY-IN LIGHT FIXTURE	⊕ WALL MOUNTED INCANDESCENT LIGHT FIXTURE	⚡⚡⚡ DIMMER SWITCH
⊕ CEILING FAN	⊕ RECESSED INCANDESCENT DOWN LIGHT	⊕ BOX PANEL
⊕ DUPLEX RECEPTACLE OUTLET - 110 VOLT	⊕ EXTERIOR FLOOD LIGHTS 150W	
⊕ 220v 220 VOLT RECEPTACLE OUTLET	⊕ CEILING MOUNTED AIMABLE INCANDESCENT LIGHT FIXTURE	
	⊕ TELEPHONE JACK	
	⊕ PUSH BUTTON	
	⊕ TELEVISION CABLE OUTLET	

**ELECTRICAL PLAN**

SC: 1/4" = 1'-0"

**PROPRIETARY NOTICE:**  
Permits & Plans here by  
reserve all rights to the content  
of the documents or the  
plans and drawings. No part  
may be reproduced, stored in  
a retrieval system, or  
transmitted in any form  
without authorization. Any  
unauthorized use, disclosure,  
or distribution of the  
contents of this document is  
prohibited. Acknowledgment of the  
Proprietary Notice.

702 ARROWWAY ST.  
HOUSTON, TX 77012  
Tel: (713)-228-9994  
Cell: (281) 800-0704  
**Permits & Plans**  
**BUILDING DESIGNER**  
\* Design \* Construction \* Consulting

PROJECT:  
DATE:  
DRAWN BY: PEREZ MITZ  
CHECKED BY:  
REVISIONS

SHEET NUMBER

**E-1**

OF